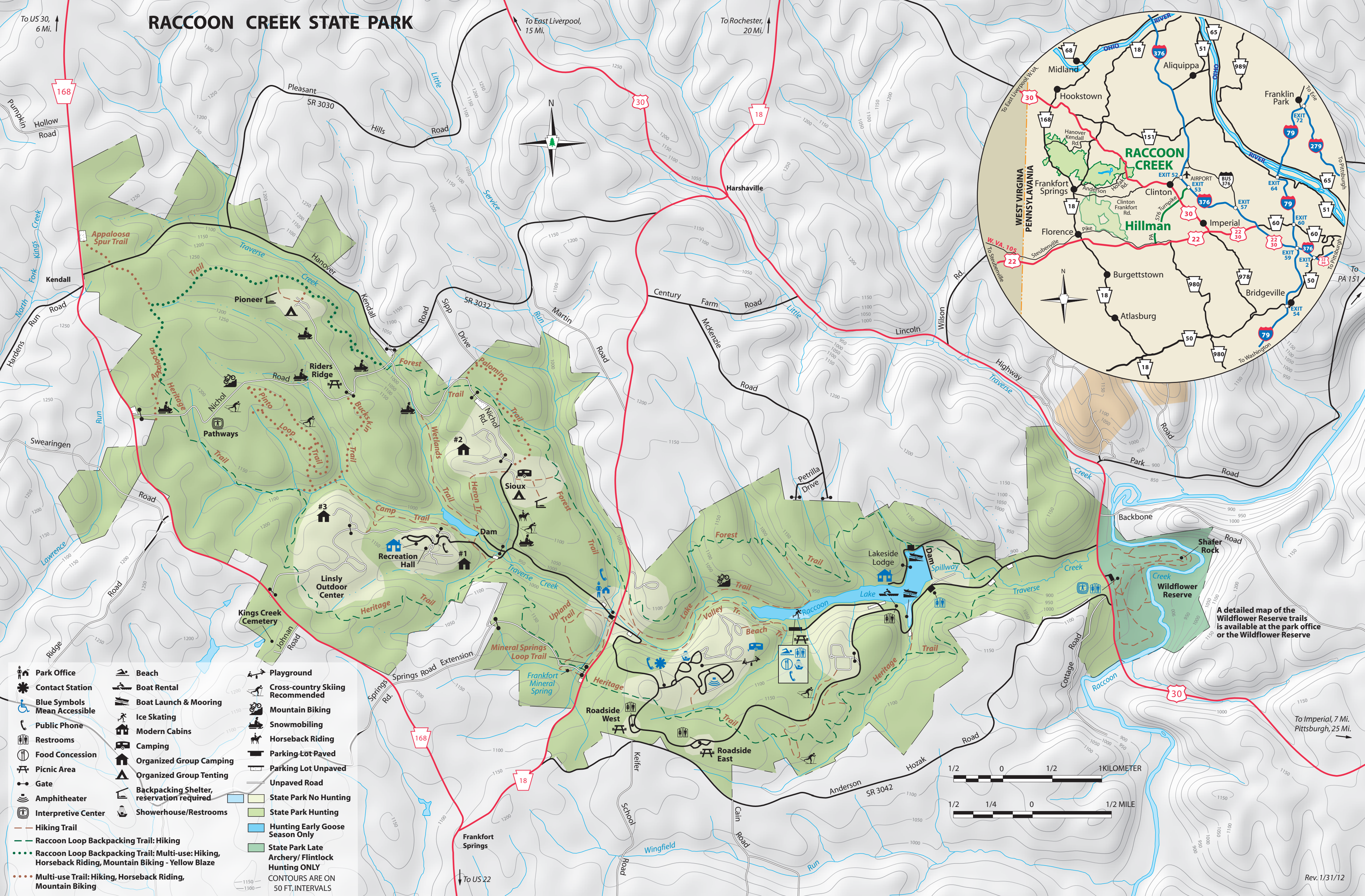
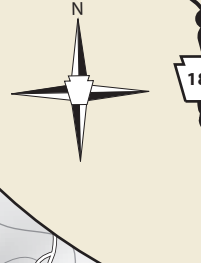


RACCOON CREEK STATE PARK



To US 30, 6 Mi. ↑



- Park Office
 - Contact Station
 - Blue Symbols Mean Accessible
 - Public Phone
 - Restrooms
 - Food Concession
 - Picnic Area
 - Gate
 - Amphitheater
 - Interpretive Center
 - Hiking Trail
 - Raccoon Loop Backpacking Trail: Hiking
 - Raccoon Loop Backpacking Trail: Multi-use: Hiking, Horseback Riding, Mountain Biking - Yellow Blaze
 - Multi-use Trail: Hiking, Horseback Riding, Mountain Biking
 - Beach
 - Boat Rental
 - Boat Launch & Mooring
 - Ice Skating
 - Modern Cabins
 - Camping
 - Organized Group Camping
 - Organized Group Tenting
 - Backpacking Shelter, reservation required
 - Showerhouse/Restrooms
 - Playground
 - Cross-country Skiing Recommended
 - Mountain Biking
 - Snowmobiling
 - Horseback Riding
 - Parking Lot Paved
 - Parking Lot Unpaved
 - Unpaved Road
 - State Park No Hunting
 - State Park Hunting
 - Hunting Early Goose Season Only
 - State Park Late Archery/ Flintlock Hunting ONLY
- CONTOURS ARE ON 50 FT. INTERVALS

A detailed map of the Wildflower Reserve trails is available at the park office or the Wildflower Reserve